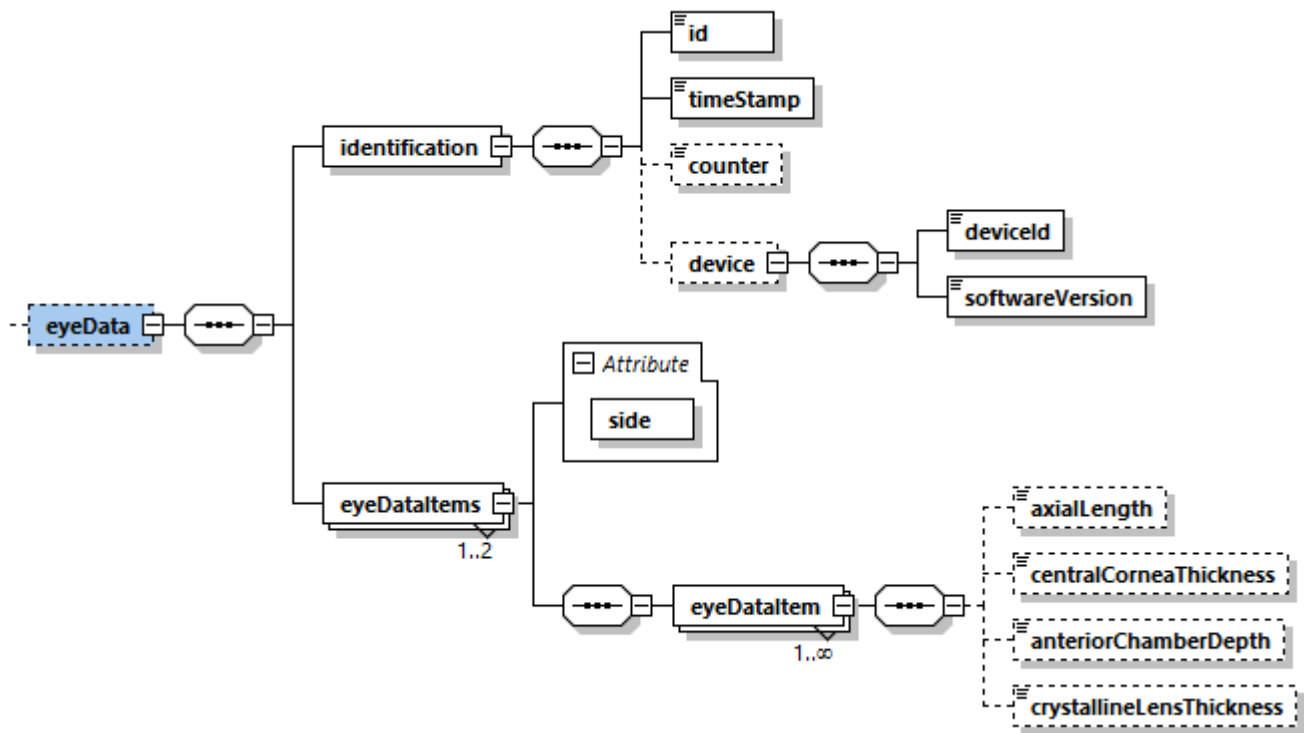


eyeData (EyeData)

b2boptic → items → item → pair → patient → eyeData



| | |
|--|--|
| identification | |
| occurs | 1 |
| id (element of identification) | |
| type | string |
| occurs | 1 |
| restriction | length: 1..50 chars |
| description | measurement id from measurement device |
| timeStamp (element of identification) | |
| type | dateTime |
| occurs | 1 |
| description | measurement time from measurement device |
| counter (element of identification) | |
| type | int |
| occurs | 0..1 |
| restriction | min: 0 |
| description | counter of ? |
| device (element of identification) | |
| occurs | 0..1 |
| deviceId (element of device) | |
| type | string |
| occurs | 1 |
| restriction | length: 1..50 chars |

| | |
|--|--|
| deviceId (element of device) | |
| description | id of measurement device |
| softwareVersion (element of device) | |
| type | string |
| occurs | 1 |
| restriction | length: 1..50 chars |
| description | software version of measurement device |
| eyeDataItems | |
| occurs | 1..2 |

| | |
|--|----------|
| side (attribute of eyeDataItem) | |
| type | Sides |
| use | required |
| description | eye side |

| | |
|---|--------------------|
| axialLength (element of eyeDataItem) | |
| type | float |
| unity | mm |
| description | axialLength of eye |

| | |
|--|-------------------------------|
| centralCorneaThickness (element of eyeDataItem) | |
| type | float |
| unity | mm |
| description | centralCorneaThickness of eye |

| | |
|--|-----------------------------|
| anteriorChamberDepth (element of eyeDataItem) | |
| type | float |
| unity | mm |
| description | anteriorChamberDepth of eye |

| | |
|--|---------------------------------|
| crystallineLensThickness (element of eyeDataItem) | |
| type | float |
| unity | mm |
| description | crystallineLensThickness of eye |

```
<xs:element name="eyeData" minOccurs="0">
  <xs:complexType>
    <xs:sequence>
      <xs:element name="identification">
        <xs:complexType>
          <xs:sequence>
            <xs:element name="id">
              <xs:simpleType>
                <xs:restriction base="xs:string">
                  <xs:minLength value="1"/>
                  <xs:maxLength value="50"/>
                </xs:restriction>
              </xs:simpleType>
            </xs:element>
            <xs:element name="timeStamp" type="xs:dateTime"/>
            <xs:element name="counter" minOccurs="0">
```

```
<xs:simpleType>
  <xs:restriction base="xs:int">
    <xs:minInclusive value="0"/>
  </xs:restriction>
</xs:simpleType>
  </xs:element>
  <xs:element name="device" minOccurs="0">
<xs:complexType>
  <xs:sequence>
    <xs:element name="deviceId">
      <xs:simpleType>
<xs:restriction base="xs:string">
  <xs:minLength value="1"/>
  <xs:maxLength value="50"/>
</xs:restriction>
    </xs:simpleType>
  </xs:element>
  <xs:element name="softwareVersion">
    <xs:simpleType>
<xs:restriction base="xs:string">
  <xs:minLength value="1"/>
  <xs:maxLength value="50"/>
</xs:restriction>
    </xs:simpleType>
  </xs:element>
</xs:sequence>
</xs:complexType>
  </xs:element>
  </xs:sequence>
</xs:complexType>
  </xs:element>
<xs:element name="eyeDataItems" maxOccurs="2">
  <xs:complexType>
    <xs:sequence>
      <xs:element name="eyeDataItem" maxOccurs="unbounded">
<xs:complexType>
  <xs:sequence>
    <xs:element name="axialLength" type="xs:float" minOccurs="0"/>
    <xs:element name="centralCorneaThickness" type="xs:float"
minOccurs="0"/>
    <xs:element name="anteriorChamberDepth" type="xs:float"
minOccurs="0"/>
    <xs:element name="crystallineLensThickness" type="xs:float"
minOccurs="0"/>
  </xs:sequence>
</xs:complexType>
    </xs:element>
  </xs:sequence>
  <xs:attribute name="side" type="SidesSimple" use="required"/>
</xs:complexType>
</xs:element>
```

```
</xs:sequence>  
</xs:complexType>  
</xs:element>
```

From:
<https://wiki.b2boptic.com/> - **wiki.b2bOptic.com**

Permanent link:
<https://wiki.b2boptic.com/en:lensorder:version010604:complextypes:eyedata>

Last update: **2022/06/30 13:50**

